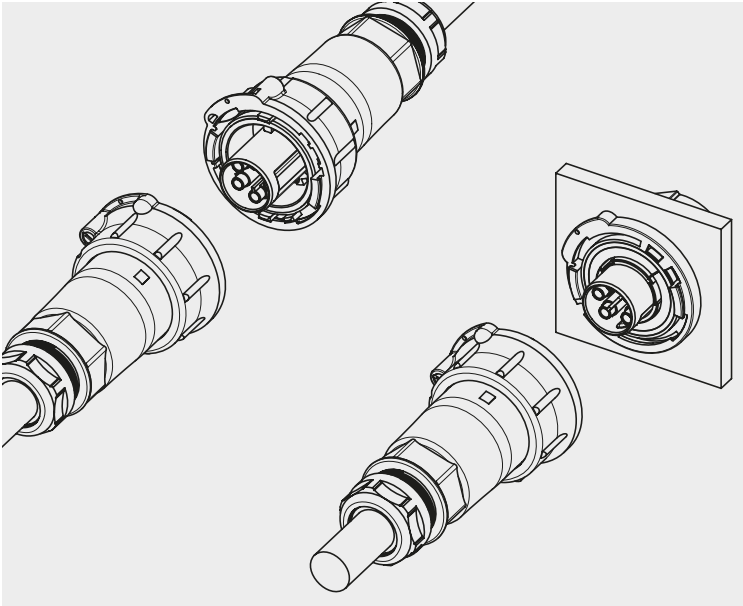




The new **RST®** POWER series up to 50 A

Application example



General

The new **RST®** POWER series is particularly designed for device engineering. With a current-carrying capability of 50 A combined with an extremely compact design, the connector fits almost everywhere.

The 4-pole connector is based on the 5-pole variation, with one pole left empty.

Coding

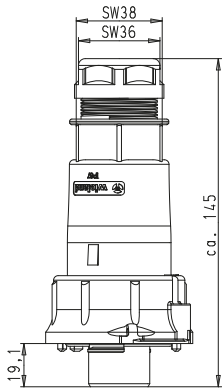
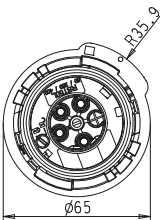
For daily updates visit the website at http://eshop.wieland-electric.com . Assembly instructions and other technical information can be found in the Technical Data or in eShop.				Application	Power max. 50 A
				Mechanical coding	250/400 V 1, 2, 3, ⊕
				Connection points per pole	black
Name	Description	Connection style	Strain relief housing		
Connectors	1 x wire entry	Screw Crimp	yes	1	✓
Device connectors	M32 connector, standard	Screw Crimp	yes	1	✓

Connectors, straight
for cables Ø 4 – 6 mm and 4 – 10 mm

Female connector



Illustration
M 32 cable gland



with screw connection

Wire	mm²
solid	from 4.0 to 6.0*)
stranded	
flexible wires	from 4.0 to 16.0
Approvals	VDE, c CSA us

with crimp connection

Wire	mm²
flexible wires	from 4.0 to 10.0
Approvals	VDE, c CSA us

Application	Coding	Cable gland	Cable Ø in mm	Color
<div>Power max. 50A</div> <div> 1, 2, 3, ⊕</div>		M32	15 – 25	black
		M40	20 – 32	black

Part No.
97.041.4053.1
97.041.4253.1

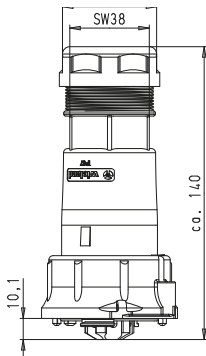
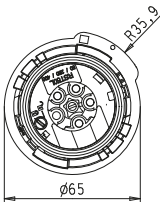
Part No.
97.141.0053.1
97.141.0253.1

Contacts separately under Accessories, see following pages.

Male connector



Illustration
M 40 cable gland



with screw connection

Wire	mm²
solid	from 4.0 to 6.0*)
stranded	
flexible wires	from 4.0 to 16.0
Approvals	VDE, c CSA us

with crimp connection

Wire	mm²
flexible wires	from 4.0 to 10.0
Approvals	VDE, c CSA us

Application	Coding	Cable gland	Cable Ø in mm	Color
<div>Power max. 50A</div> <div> 1, 2, 3, ⊕</div>		M32	15 – 25	black
		M40	20 – 32	black

Part No.
97.042.4053.1
97.042.4253.1

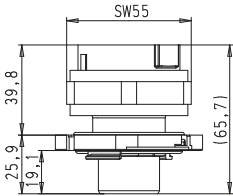
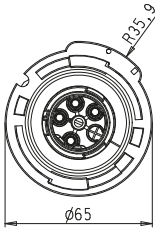
Part No.
97.142.0053.1
97.142.0253.1

Contacts separately under Accessories, see following pages.

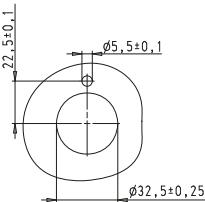
*) Solid and stranded wires > 6.0 mm² cannot be connected in the available space due to their rigidity.

M32 device connector
straight, standard

Female connector



Drilling template for
device connectors fixed
in position



with screw connection

Wire	mm²
solid	from 4.0 to 16.0
stranded	from 4.0 to 16.0
flexible wires	from 4.0 to 16.0
Approvals	VDE, c CSA us

with crimp connection

Wire	mm²
flexible wires	from 4.0 to 10.0
Approvals	VDE, c CSA us

Application Coding Fixation with bolts Color

Power max. 50A		fixed in position	black
		not fixed in position	black

Part No.

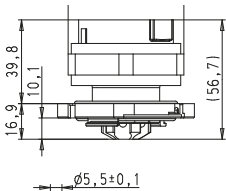
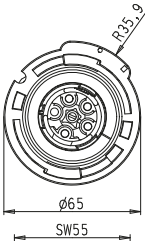
97.041.5553.1
97.041.5053.1

Part No.

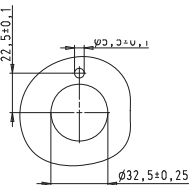
97.141.1553.1
97.141.1053.1

Contacts separately under Accessories, see following pages.

Male connector



Drilling template for
device connectors fixed
in position



with screw connection

Wire	mm²
solid	from 4.0 to 16.0
stranded	from 4.0 to 16.0
flexible wires	from 4.0 to 16.0
Approvals	VDE, c CSA us

with crimp connection

Wire	mm²
flexible wires	from 4.0 to 10.0
Approvals	VDE, c CSA us

Application Coding Fixation with bolts Color

Power max. 50A		fixed in position	black
		not fixed in position	black

Part No.

97.042.5553.1
97.042.5053.1

Part No.

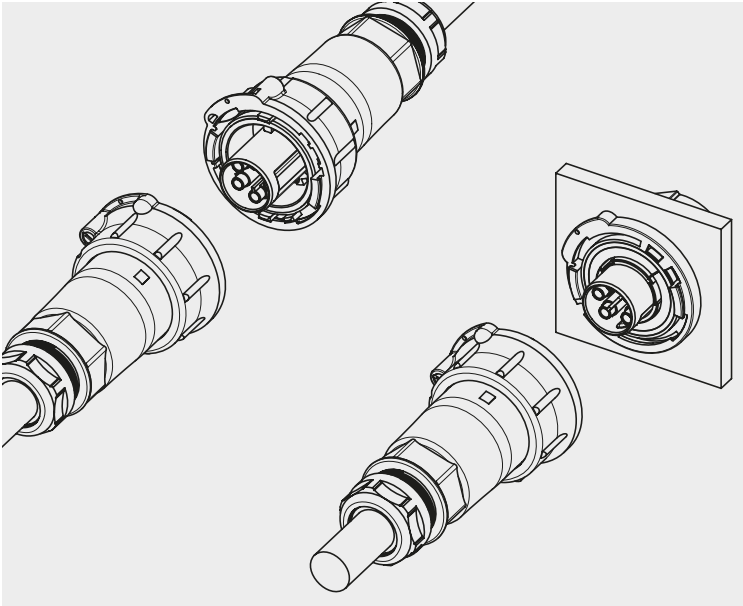
97.142.1553.1
97.142.1053.1

Contacts separately under Accessories, see following pages.



The new **RST**® POWER series up to 50 A

Application example



General

The new **RST**® POWER series is particularly designed for device engineering. With a current-carrying capability of 50A combined with an extremely compact design, the connector fits almost everywhere.

Coding

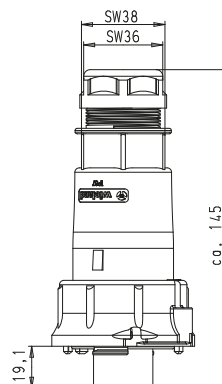
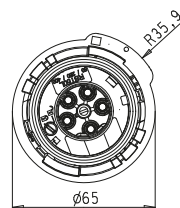
For daily updates visit the website at http://eshop.wieland-electric.com . Assembly instructions and other technical information can be found in the Technical Data or in eShop.				Application	Power max. 50A
				Mechanical coding	250/400V 1, 2, 3, N, ⊕
				Color	black
Name	Description	Connection style	Strain relief housing	Connection points per pole	
Connectors	1 x wire entry	Screw Crimp	yes	1	✓
Device connectors	M32 connector, standard	Screw Crimp	yes	1	✓

Connectors, straight for cables Ø 4 – 6 mm and 4 – 10 mm

Female connector



Illustration
M 32 cable gland



with screw connection

Wire	mm ²
solid	from 4.0 to 6.0*)
stranded	
flexible wires	from 4.0 to 16.0
Approvals	VDE, c CSA us

with crimp connection

Wire	mm ²
flexible wires	from 4.0 to 10.0
Approvals	VDE, c CSA us

Application Coding Cable gland Cable Ø in mm Color

Power max. 50A		M32	15 – 25	black
		M40	20 – 32	black

Part No.

97.051.4053.1
97.051.4253.1

Part No.

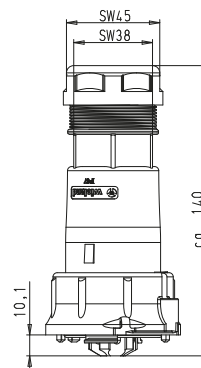
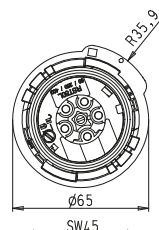
97.151.0053.1
97.151.0253.1

Contacts separately under Accessories, see following pages.

Male connector



Illustration
M 40 cable gland



with screw connection

Wire	mm ²
solid	from 4.0 to 6.0*)
stranded	
flexible wires	from 4.0 to 16.0
Approvals	VDE, c CSA us

with crimp connection

Wire	mm ²
flexible wires	from 4.0 to 10.0
Approvals	VDE, c CSA us

Application Coding Cable gland Cable Ø in mm Color

Power max. 50A		M32	15 – 25	black
		M40	20 – 32	black

Part No.

97.052.4053.1
97.052.4253.1

Part No.

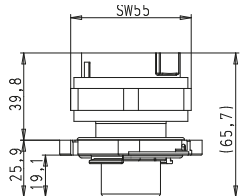
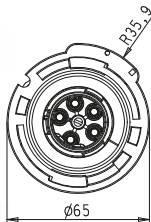
97.152.0053.1
97.152.0253.1

Contacts separately under Accessories, see following pages.

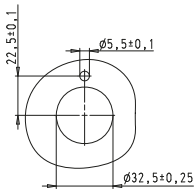
*) Solid and stranded wires > 6.0 mm² cannot be connected in the available space due to their rigidity.

M32 device connector
straight, standard

Female connector



Drilling template for
device connectors fixed
in position




with screw connection

Wire	mm²
solid	from 4.0 to 16.0
stranded	
flexible wires	from 4.0 to 16.0
Approvals	VDE, c CSA us

with crimp connection

Wire	mm²
flexible wires	from 4.0 to 10.0
Approvals	VDE, c CSA us

Application Coding Fixation with bolts Color

Power max. 50A		fixed in position	black
		not fixed in position	black
		N, 1, 2, 3	

Part No.

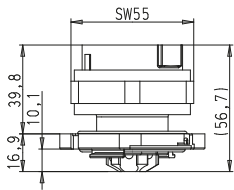
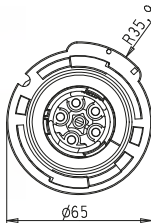
97.051.5553.1
97.051.5053.1

Part No.

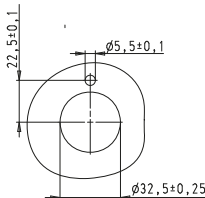
97.151.1553.1
97.151.1053.1

Contacts separately under Accessories, see following pages.

Male connector



Drilling template for
device connectors fixed
in position




with screw connection

Wire	mm²
solid	from 4.0 to 16.0
stranded	
flexible wires	from 4.0 to 16.0
Approvals	VDE, c CSA us

with crimp connection

Wire	mm²
flexible wires	from 4.0 to 10.0
Approvals	VDE, c CSA us

Application Coding Fixation with bolts Color

Power max. 50A		fixed in position	black
		not fixed in position	black
		N, 1, 2, 3	

Part No.

97.052.5553.1
97.052.5053.1

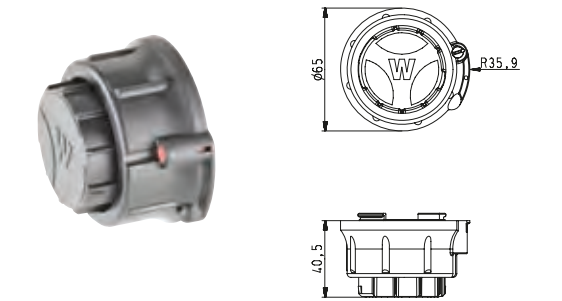
Part No.

97.152.1553.1
97.152.1053.1

Contacts separately under Accessories, see following pages.

Cover

For safe covering of unused male or female components



Name	Color	Part No.
Cover	black	Z5.567.5653.0

Sample kit RST 50i5
Complete kit

Contents:

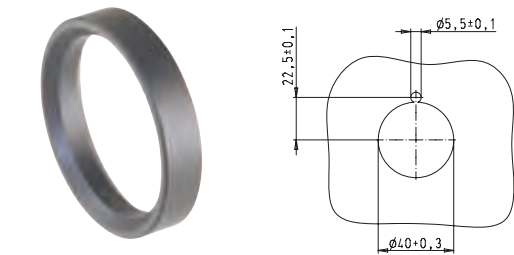
- Connectors
- Device connection
- Cover
- Knock-out (metal sheet)



Name	Color	Part No.
Sample kit RST50i5	black	99.628.0000.0

Adapter ring 40 mm

For fixing the device connector inside 40 mm knock-outs



Name	Color	Part No.
Adapter ring	black	05.568.1853.0

RST® POWER Crimp contacts

Female contact



Male contact



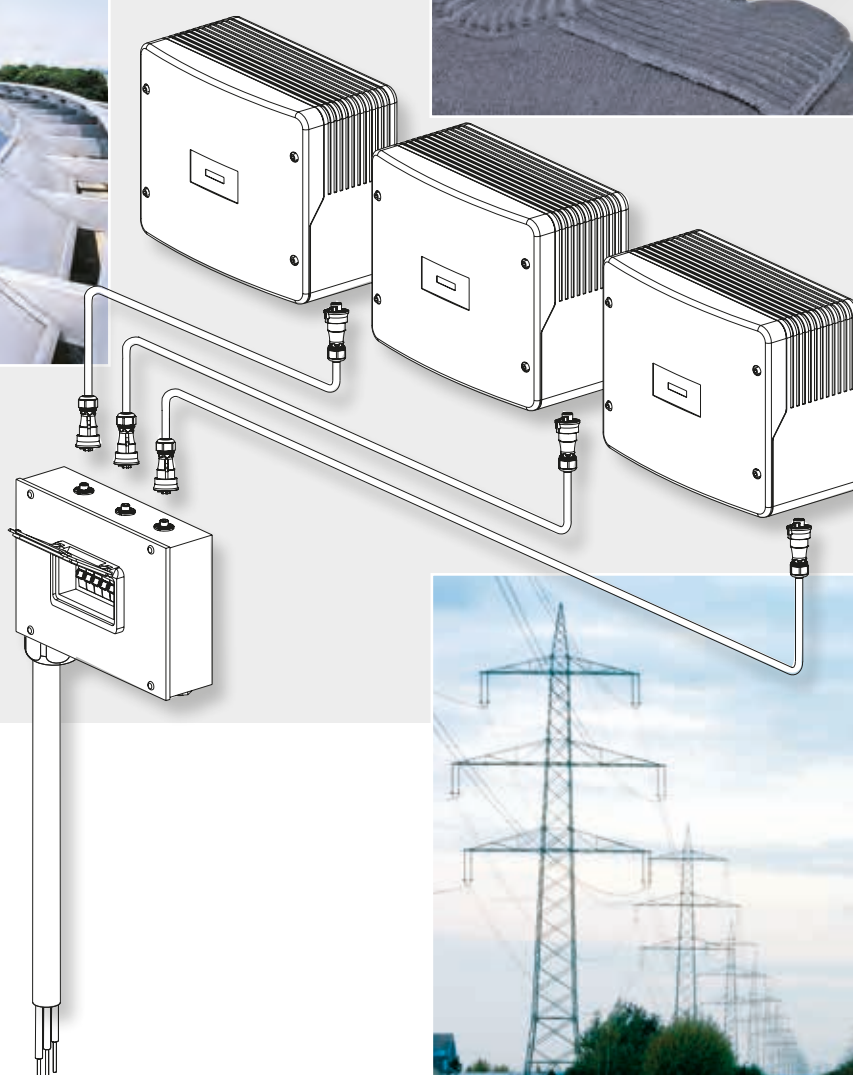
Name	Marking	(groove) mm²	Part No.
Female contact	None	4.0	02.126.0621.8
Female contact	1	6.0	02.126.0721.8
Female contact	None	10.0	02.126.0821.8
Male contact	None	4.0	05.545.2821.8
Male contact	1	6.0	05.545.2921.8
Male contact	None	10.0	05.545.3021.8

Crimping tool with system kit



Name	Part No.
Crimping tool (supplied in case)	95.101.0800.0
Crimping die D	05.502.2300.0

Convincing technology

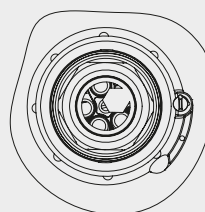
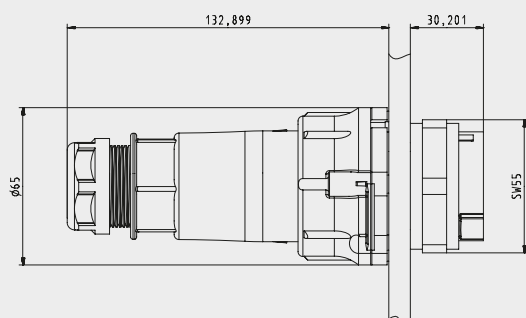


Example:
Solar collective
distribution box

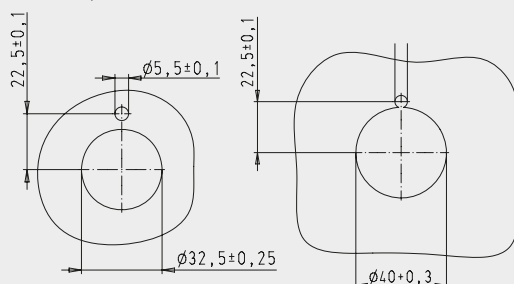


RST® POWER

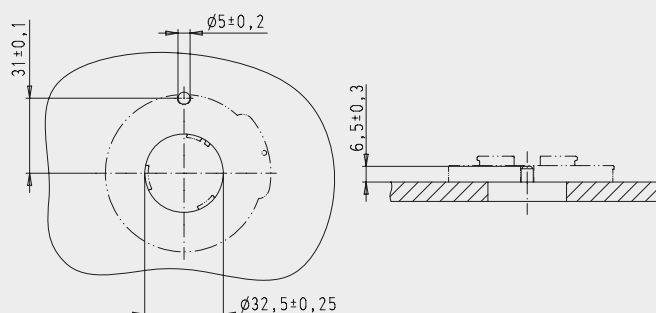
Rated voltage:	250/400 V	
Rated current:	50 A	
Rated cross-section:	rigid cables with 4.0 mm ² to 6.0 mm ² for plug connectors (up to 16 mm ² with device connectors) fine-stranded cables with 4.0 mm ² to 16.0 mm ²	
Number of poles:	4-pole	5-pole
Pole designation:	1, 2, 3, \oplus	1, 2, 3, N, \oplus
Material:	Contact parts: brass, surface-plated Housing parts: thermoplastic material PA 66, halogen-free, V2 Sealing material NBR, TPE	
Degree of protection:	IP66/67/69	
Approvals:	VDE, cCSA us You can find the direct assignment of approvals and part numbers in the internet in the eShop under http://eshop.wieland-electric.com , or consult us.	
Sheath strip length:	L/N = 70 mm, SL = 80 mm	
Insulation strip length:	Screw 10 mm (crimp 11 mm)	
Torques:	Cable gland SW 36: 8 Nm; SW 38: 14 Nm	



Hole pattern for M32 device connectors,
alternative M40 with adapter ring
(fixed in position)

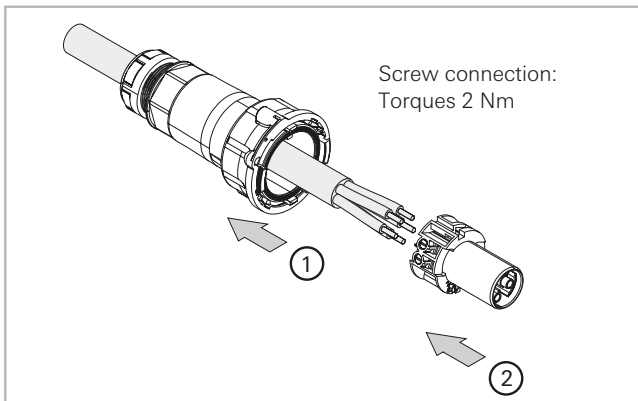


Alternative fixed in position (cams on the housing)

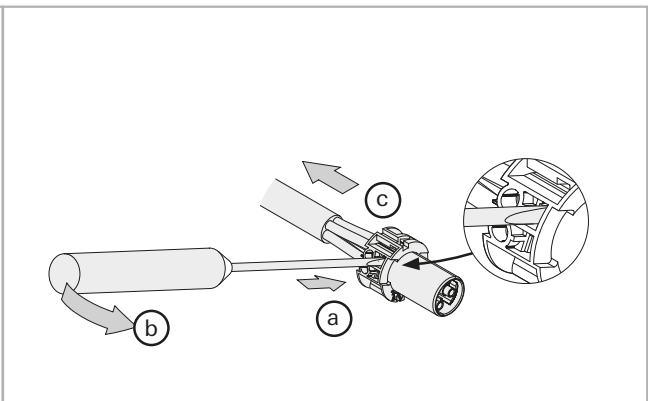


Connectors 4- and 5-pole

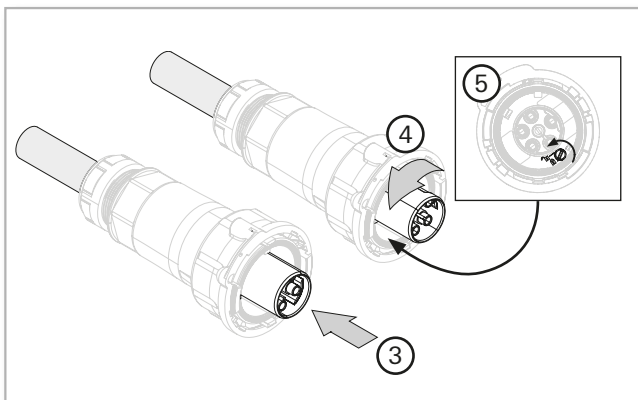
Connect the wires ...



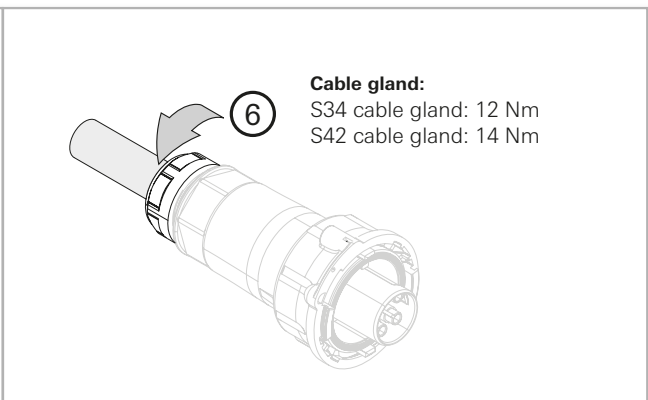
... Disconnect the crimp contacts



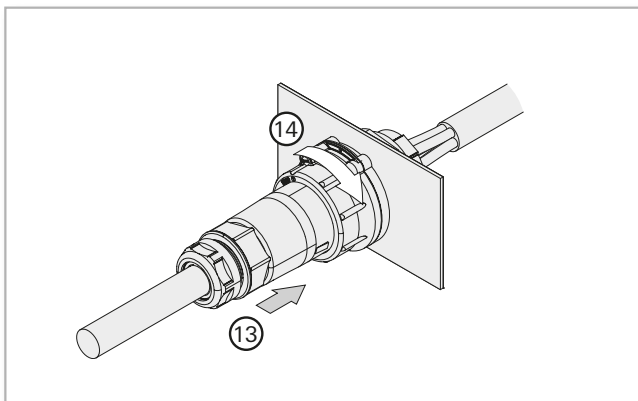
Secure the contact inserts ...



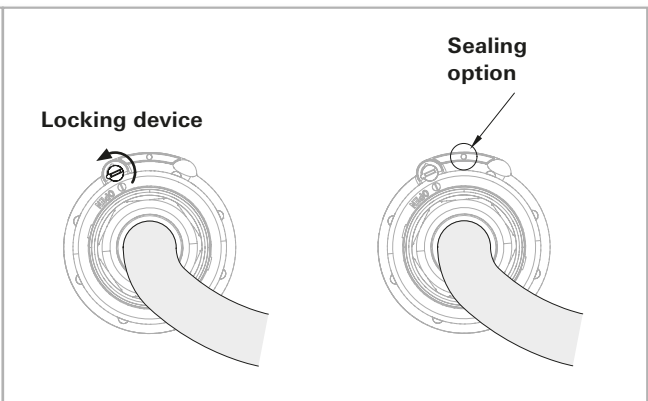
... Tighten the cable gland



Bayonet lock ...

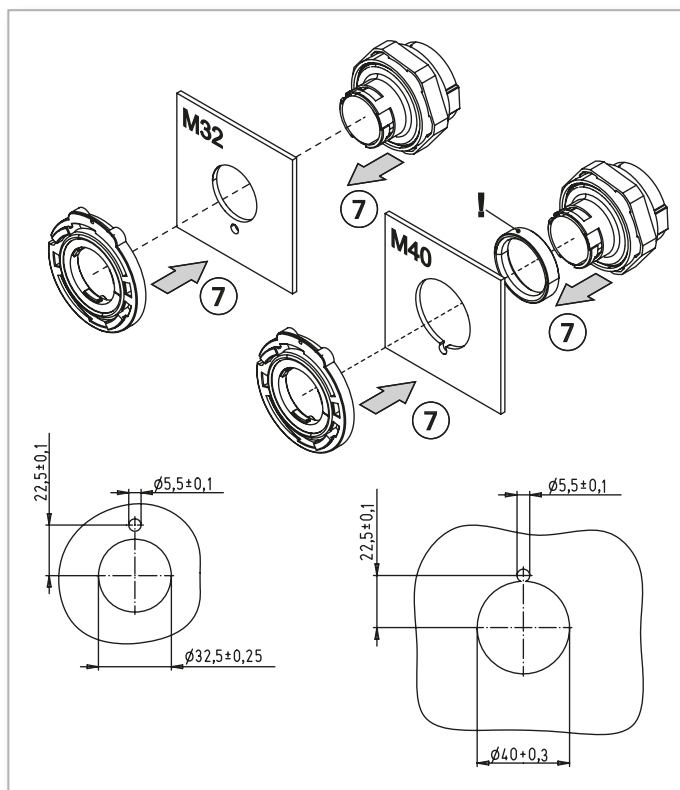


... and protection against unintentional disconnection

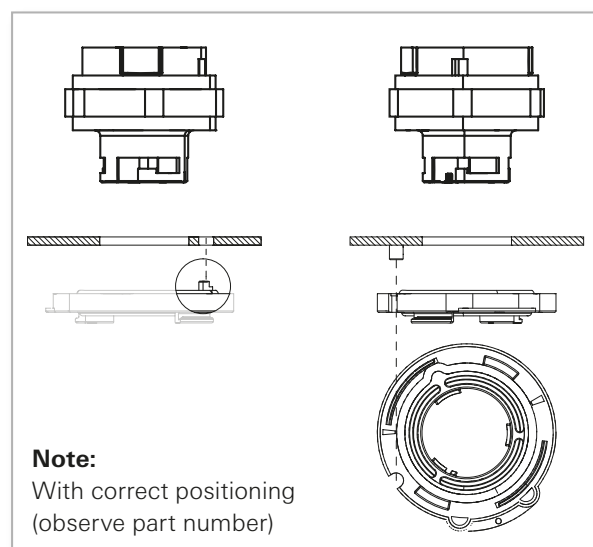


Device connections 4- and 5-pole

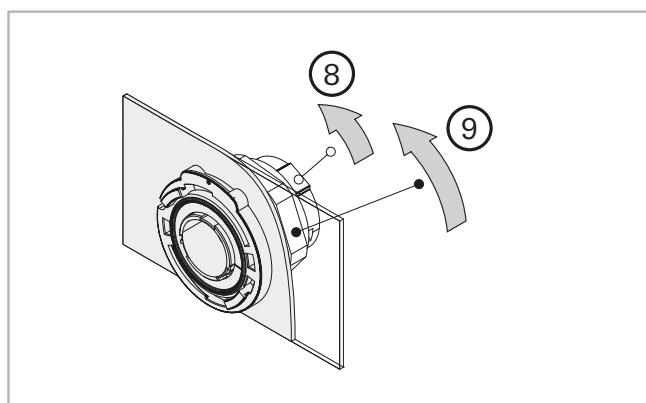
Mounting housing flange,
dimensions in mm



Positioning option



Latching the housing flange ...



... securing the contact insert

