

RST® POWER TECHNICAL DATA

	RST50i4/i5
Rated voltage	250/400 V
Rated current	50 A
Number of poles	4 and 5-pole
Connectable cable diameter*	15 - 25 mm; 20 - 32 mm
Material	Contact parts: Brass, surface-treated housing parts: Polyamide, halogen-free, V2 Sealing material NBR, TPE
Pollution degree	3 (when connected)
Protection rating	IP66/67/69
IK code	IK07 (2 joules)
Certificates / approvals	VDE, c CSA us

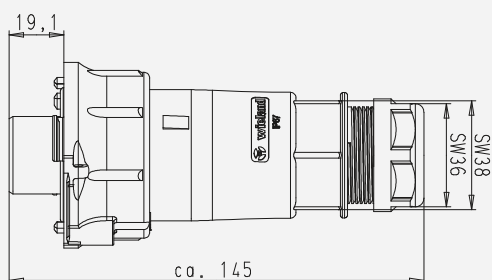
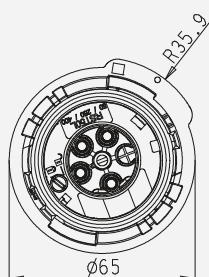
*Other diameters on request

RST® POWER DIMENSIONS

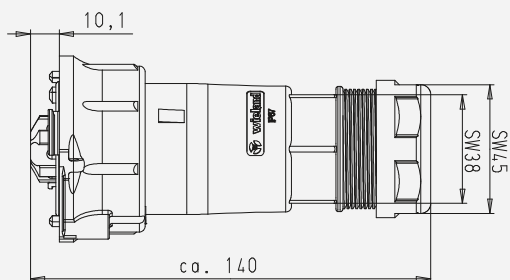
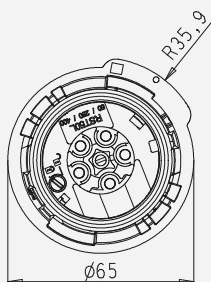
RST50i4/i5

CONNECTORS

female

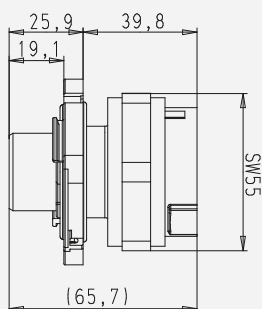
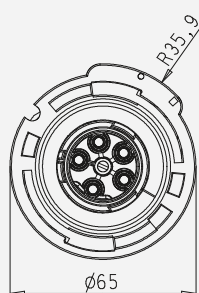


male

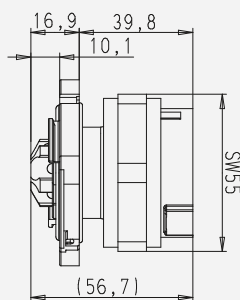
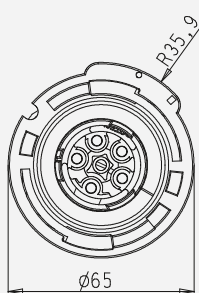


DEVICE CONNECTOR

female



male



NOTE:

The drawing for your product can be found in the download area of the relevant Art.No. at eshop.wieland-electric.com




RST® POWER CABLE PREPARATION

Connectable cable cross-sections

Model	Solid		Fine-wired		Multi-stranded	
	Connectors	Device connector	Connectors	Device connector	Connectors	Device connector
Screw connection	4.0 - 6.0 mm ² *	4.0 - 16.0 mm ²	4.0 - 16.0 mm ²	4.0 - 16.0 mm ²	4.0 - 6.0 mm ² *	4.0 - 16.0 mm ²
Crimp connection	-	-	4.0 - 10.0 mm ²	4.0 - 10.0 mm ²	-	-

* Solid and multi-wired cable > 6.0 mm² cannot be connected in the existing installation space due to their stiffness.

 RST® terminals with screw clamping allow the connection of conductors without special preparation according to EN 60999-1.
Crimp contacts must always be ordered separately to the connector. The range of crimp contacts can be found in RST® POWER accessories.

Sheath strip and wire strip lengths

Cable		PE	1, 2, 3, N, PE
Sheath strip length	Screw connection	80 mm	70 mm
	Crimp connection	80 mm	70 mm
Wire strip length	Screw connection	10 mm	10 mm
	Crimp connection	11 mm	11 mm

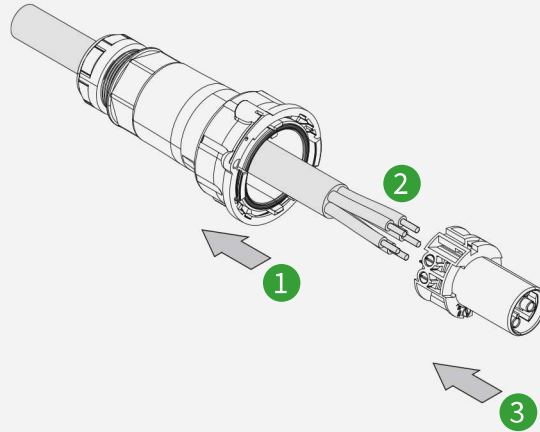


RST® POWER ASSEMBLY INSTRUCTION

CABLE ASSEMBLY

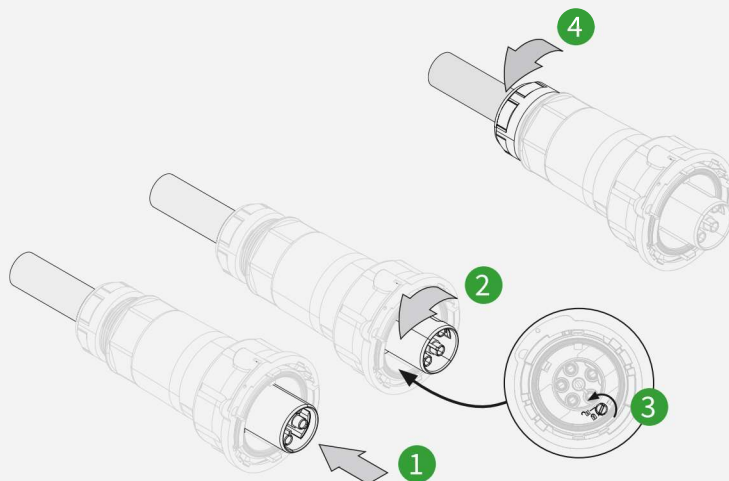
1. Pull the housing over the cable
2. Prepare cable (see technical specifications)
3. Insert prepared cable (for screw connections: tighten screws, torque 2 Nm)

Note: Make sure that the cables are firmly fixed in the connections.



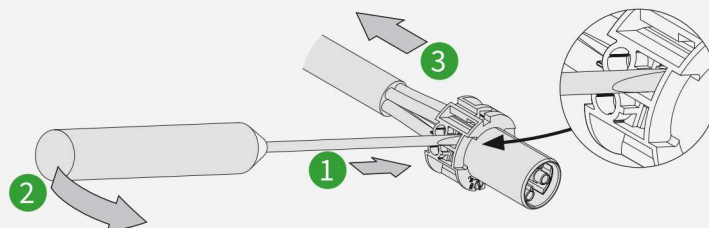
CLOSING THE CONNECTOR

1. Introduce contact insert into housing (observe coding)
2. Turn the contact insert as far as it will go
3. Lock the contact insert
4. Tighten gland nut, torque
 - M32 gland nut: 8 Nm
 - M40 gland nut: 14 Nm




CABLE REMOVAL, CRIMP CONNECTION

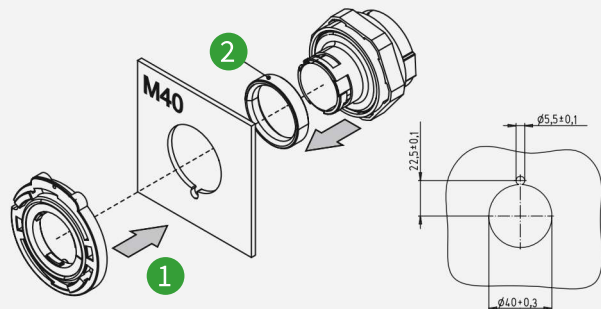
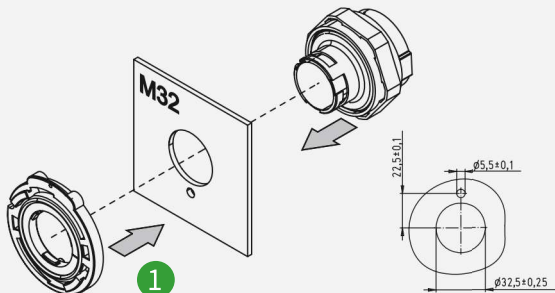
1. Insert screwdriver (see detail)
2. Open latch by lever movement
3. Pull out cable



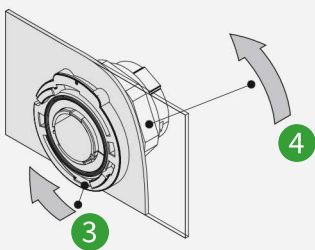
DEVICE CONNECTOR

 Housing wall thickness: 2 - 7 mm
Surface: smooth and even

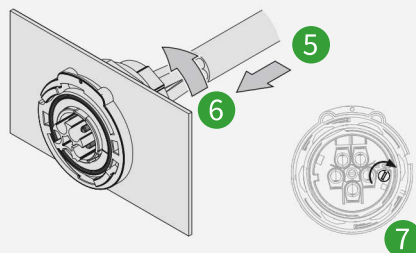
1. Join the parts together
2. Use the adapter ring for M40 bores



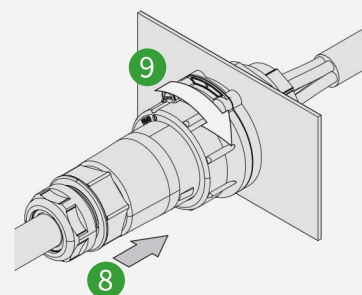
3. Engage bayonet ring, insert fixing pin into corresponding bore
4. Tighten locknut (torque: 2 Nm)



5. Introduce contact insert into device connector housing (observe coding)
6. Turn the contact insert as far as it will go
7. Lock contact insert (connected cable left out for clarity)

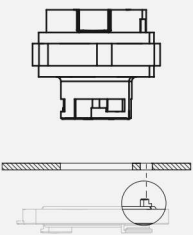


8. Plug in RST® connection
9. Close bayonet

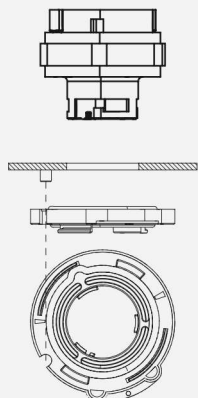


OPTIONS

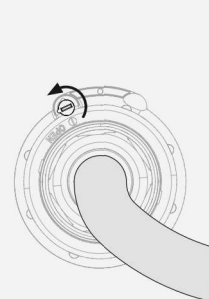
Fixing pin on flange



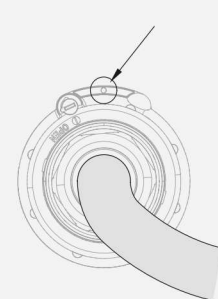
Fixing pin on mounting plate




Lock connection



Seal



 Proceed in the same way for 4 and 5-pole connectors.
Observe the pole configuration.

NOTE: Please note that electrical connections and installations must be carried out only by appropriately trained specialists.
The Assembly instructions accompanying the product must be observed! The relevant Assembly instruction BA000641 can be found online in the download area of the product concerned: eshop.wieland-electric.com